

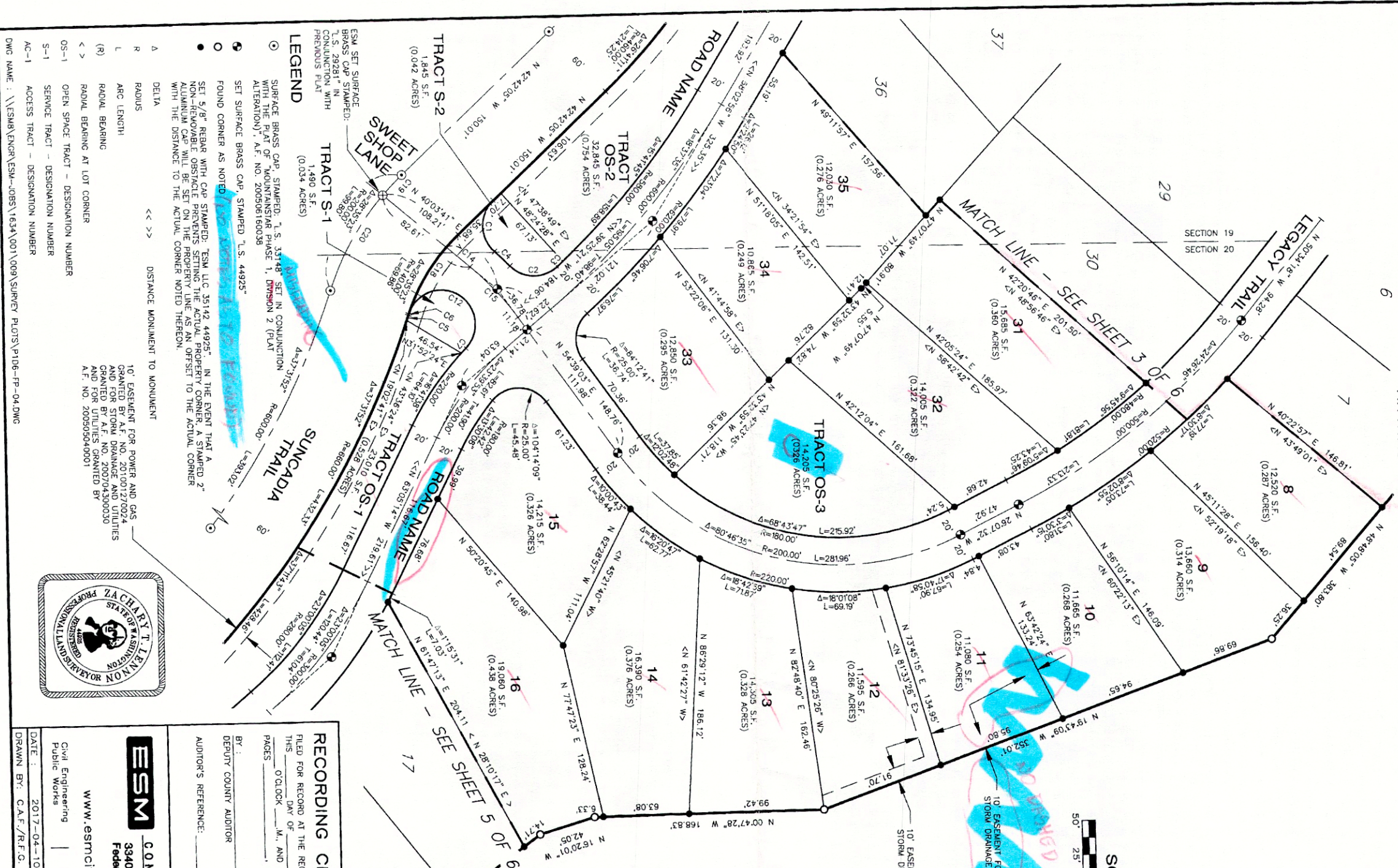
AUDITOR'S REFERENCE

THE LEGACY AT SUNCADIA  
 SUNCADIA - PHASE 1 DIVISION 6  
 A PORTION OF SECTIONS 19 AND 20, TOWNSHIP 20 NORTH, RANGE 15 EAST, W.M.  
 KITTITAS COUNTY, WASHINGTON



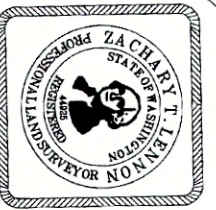
SCALE: 1" = 50'

CURVE	DELTA	RADIUS	LENGTH
C1	95°25'40"	23.00	41.94
C2	87°39'02"	25.00	38.24
C3	0°34'16"	580.00	5.78
C4	3°59'52"	220.00	15.35
C5	0°20'09"	660.00	3.87
C6	0°30'40"	140.00	1.25
C7	1°17'16"	220.00	4.94
C12	205°40'28"	25.00	89.74
C14	5°11'28"	140.00	12.68
C15	14°35'22"	200.00	50.93
C18	22°53'17"	140.00	55.93
C19	05°48'17"	200.00	20.26
C20	22°47'06"	200.00	79.54



- LEGEND**
- SURFACE BRASS CAP, STAMPED: "T.S. 33748 SET IN CONJUNCTION WITH THE PLAT OF 'MOUNTAINSTAR PHASE 1, DIVISION 2 (PLAT ALTERATION)', A.F. NO. 200506160038
  - SET SURFACE BRASS CAP STAMPED "T.S. 44925"
  - FOUND CORNER AS NOTED
  - SET 5/8" REBAR WITH CAP STAMPED: "ESM, LLC 35142 44925" IN THE EVENT THAT A NON-REMOVABLE OBSTACLE PREVENTS THE ACTUAL PROPERTY CORNER A STAMPED 2" ALUMINUM CAP BEING SET TO THE ACTUAL CORNER. THE PROPERTY LINE IS TO BE LOCATED WITH THE DISTANCE TO THE ACTUAL CORNER NOTED THEREON.
  - Δ DELTA
  - Δ DISTANCE MONUMENT TO MONUMENT
  - R RADIUS
  - L ARC LENGTH
  - (R) RADIAL BEARING
  - <> RADIAL BEARING AT LOT CORNER
  - OS-1 OPEN SPACE TRACT - DESIGNATION NUMBER
  - S-1 SERVICE TRACT - DESIGNATION NUMBER
  - AC-1 ACCESS TRACT - DESIGNATION NUMBER

DWG NAME: \\ESM\ENGR\ESM-JOBS\1634\001\009\SURVEY PLOTS\PI06-IP-04.DWG



**RECORDING CERTIFICATE**

FILED FOR RECORD AT THE REQUEST OF KITTITAS COUNTY BOARD OF COMMISSIONERS, THIS \_\_\_\_\_ DAY OF \_\_\_\_\_ A.D. 2017, AT \_\_\_\_\_ MINUTES PAST \_\_\_\_\_ O'CLOCK \_\_\_\_\_ M., AND RECORDED IN VOLUME \_\_\_\_\_ OF PLATS, ON PAGES \_\_\_\_\_ RECORDS OF KITTITAS COUNTY, WASHINGTON.

BY: \_\_\_\_\_ KITTITAS COUNTY AUDITOR  
 DEPUTY COUNTY AUDITOR  
 AUDITOR'S REFERENCE: \_\_\_\_\_

**ESM CONSULTING ENGINEERS LLC**  
 33400 8th Ave. S, #205  
 Federal Way, WA 98003  
 www.esmcivil.com

Civil Engineering | Land Surveying  
 Public Works | Project Management | Landscape Architecture

DATE: 2017-04-10  
 DRAWN BY: C.A.F./R.F.C. SHEET 4 OF 6